

Metr@Park™

Halifax, Nova Scotia

Focus on
Precast Concrete Solutions



Metro Park opened in the early spring of 2002 adding much needed parking spaces in the downtown area of Halifax with this new high tech, seven level parking and commercial structure.

The structure was constructed with a precast prestressed concrete building system using beams, columns, architectural spandrels, shearwalls, litewalls and double tee floor slabs.

The layout of the garage is continuous interwoven spiral ramp with two way traffic flow. The building was serviced with two precast concrete stair towers and one elevator.

The designers wanted the Parking structure to blend in with surrounding older brick and stone in

downtown Halifax. To accomplish this, the lower two floors were clad with earth colored pigmented precast concrete panels to express the architecture of the area.

The column free interior of this parking garage provides parking for 575 cars in 165,000 sq. ft. of floor area. The two level / 8,500 sq. ft. of commercial, leased, space offers a beautiful view of Halifax Harbor.



Owner: **Halifax Regional Municipality - Halifax, Nova Scotia**
Developer: **The Hardman Group - Halifax, Nova Scotia**
Architects: **Duffus Romans Kundzins Rounsefell Architects Ltd. - Halifax, Nova Scotia**
Structural Consultants: **Campbell Comeau Engineering Limited - Halifax, Nova Scotia**
General Contractor: **McAlpine Construction - Halifax, Nova Scotia**
Precast Fabricator: **Strescon Limited - Saint John, New Brunswick**

website: www.strescon.com
e-mail: sales@strescon.com

Strescon is a member of the OSCO Construction Group



Corporate Office
400 Chesley Drive
PO Box 3187
Saint John, NB E2M 3S3
Phone: 506-632-2600
Fax: 506-632-7689

New Brunswick Plant
101 Ashburn Road
Saint John, NB E2L 3W2
Phone: 506-633-8877
Fax: 506-632-7576

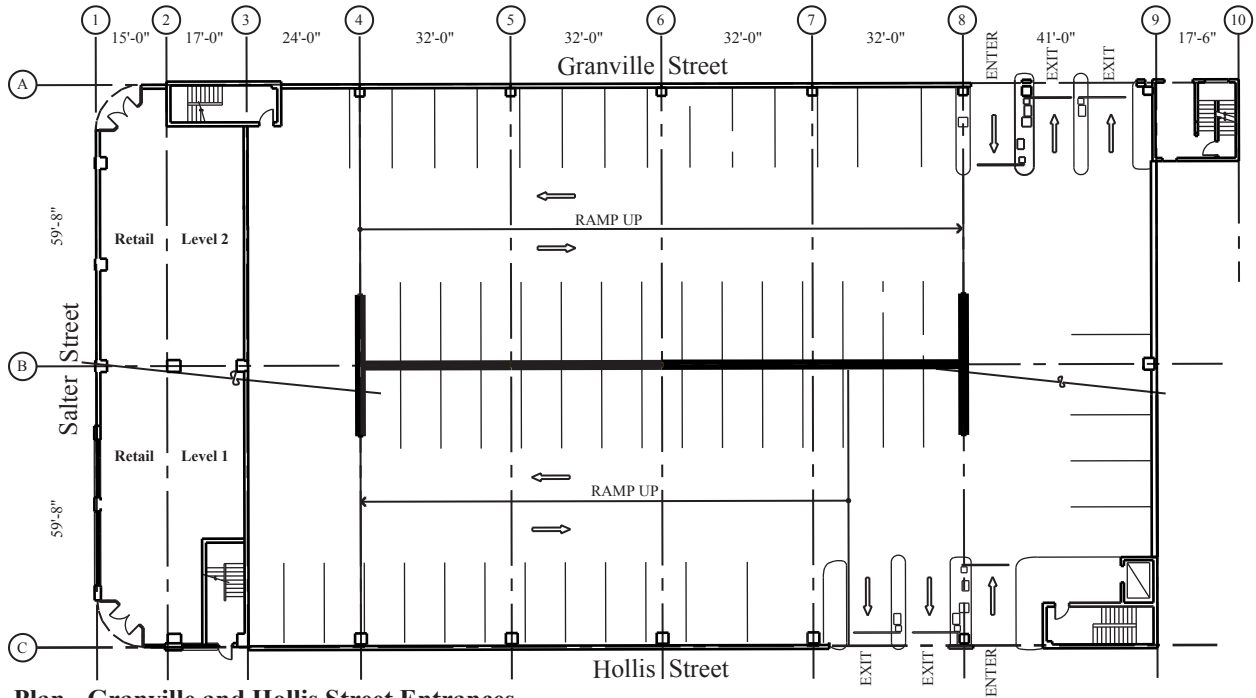
Nova Scotia Plant
131 Duke Street
PO Box 44205
Bedford, NS B4A 3Z8
Phone: 902-494-7400
Fax: 902-494-7401

New England Office
25 Burlington Mall Road
Burlington, MA 01803
Phone: 781-221-2153
Fax: 781-221-2155

P A R K I N G G A R A G E S
S t r u c t u r a l B u i l d i n g S y s t e m s

MetrPark™

Halifax, Nova Scotia



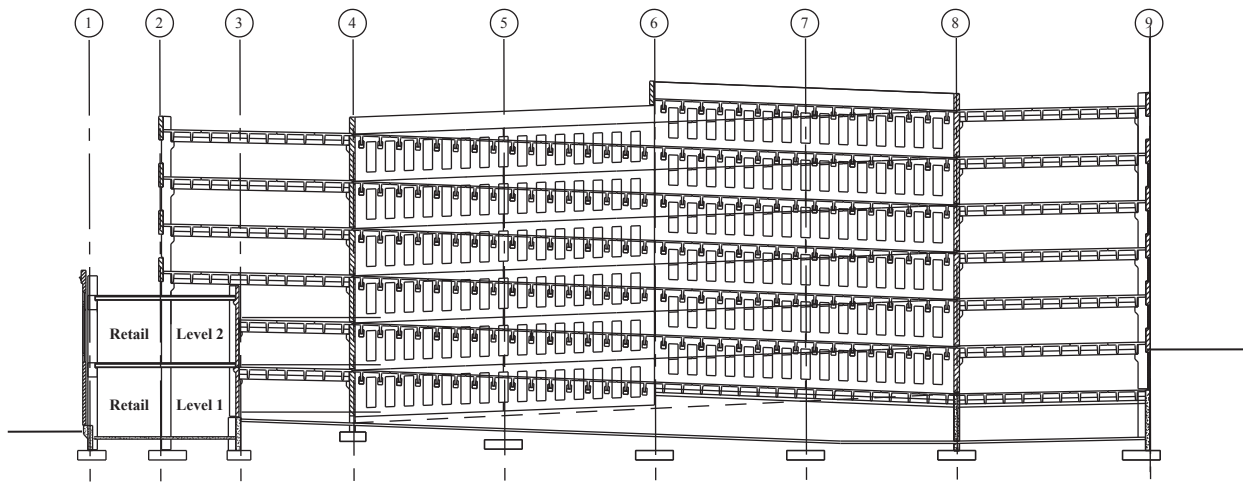
Plan - Granville and Hollis Street Entrances.



Open Unobstructed Visibility.



Column Free Interior Space.



Building Section.

PROJECT FACTS:

- ★ 832 Precast Concrete Pieces
- ★ 10'-0" floor to floor
- ★ 60 ft. pre-topped clear spans
- ★ 150,000 sq. ft. of parking
- ★ Two way traffic
- ★ 5000 sq. ft. of retail space
- ★ 120'-0" x 242'-6" footprint
- ★ Low slope ramps
- ★ 2.5 months to erect the precast